

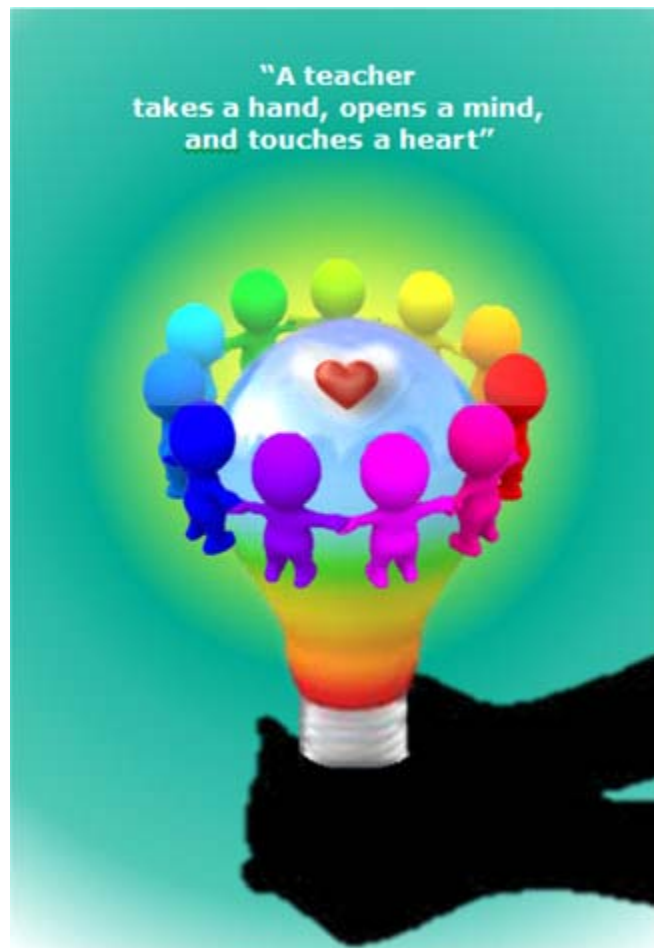
FFEA

2013-2014

District Contest

Rules

22nd Annual FFEA District Conference





“A teacher takes a hand, opens a mind, and touches a heart.”

Volusia County Schools FFEA District Conference Spirit Competition

COMPETITION PURPOSE

The purpose of the Spirit Competition is to provide an opportunity for clubs and chapters to display group spirit, demonstrate artistic creativity, and relate to the goals of FFEA or the conference theme.

ELIGIBILITY FOR ENTRY

- A. Schools **must** indicate their plans to enter the spirit competition on the Conference Registration Form. Only clubs/chapters who meet the entry deadline listed on the form will be allowed to compete at the conference.
- B. **Must** be a recognized club or chapter in Volusia County Schools or Charter School.
- C. Clubs and chapters **must** follow all conference rules and regulations.

GUIDELINES

- A. Each club and chapter should prepare a chapter song, cheer or dance and a colorful banner or poster displaying the name of the chapter, school colors, and the school mascot (if applicable). The teams may vary in size but **must** contain a minimum of 2 students.
- B. **Chapters are encouraged to demonstrate their enthusiasm and spirit throughout the conference through the use of chapter banners, buttons or T-shirts.**
- C. If you have music it **must** be dropped off at the registration desk no later than **8:25 am**. Music **must** be presented on a CD.
- D. Shoes **must** be worn at all times.
- E. High-risk dance maneuvers are prohibited.
- F. All cheers and songs **must** have appropriate and acceptable lyrics.
- G. All teams **must** enter and exit the stage in a quick and safe manner.

IV. JUDGING CRITERIA

- A. A panel of judges will be selected to evaluate the performance.
- B. There will be one first place, one second and one third place award at each school level. A Grand Prize trophy will be awarded to the overall winner.
- C. Ratings will be based on the following:

• Spirit	20
• Time Limit (1 to 2 minutes)	20
• Promotes or Emphasizes Theme	20
• Precision of Performance	20
• Creativity of Performance	20
Total	100

FFEA Chapter Spirit Competition

ELIGIBILITY:

- All chapters attending the conference are required to participate in the Chapter Spirit competition.
- Entries will be categorized according to the school level (high school and post secondary).

GUIDELINES:

- Chapter roll call is intended to showcase the chapter and school. Entries should also incorporate the conference theme, "Teachers Make Dreams Come True."
- All chapters should prepare a chapter song, cheer or dance and a colorful banner or poster displaying the name of the chapter, school colors, name of the school district, and the school mascot (if applicable) for the presentation during the chapter roll call.
- Chapter roll call will be held Friday evening. Those chapters arriving late must contact the FFEA Coordinator in advance to schedule an alternative time to perform. Late arrival to the conference due to school schedules/activities will not result in penalties for those chapters.
- Chapters are encouraged to demonstrate their enthusiasm and spirit throughout the conference through the display of chapter banners, buttons, and/or T-shirts.
- Attendance at general and workshop sessions and compliance with the dress code by chapter representatives throughout the conference will be considered in identifying award winners.
- Chapter members are expected to conduct themselves in a professional manner when representing FFEA. Reports of disturbances from hotel security or other staff will result in penalties or disqualification.

SCORING:

- Winners will be determined based on the judges' observations during roll call *and throughout the conference*.
- There is no official scoring rubric for chapter roll call, as the performances often occur too quickly for judges to complete such a form. However, judges primarily base their decisions upon the following criteria (in no particular order):
 - Voice quality (spoken words are easy to hear and understand; clear enunciation)
 - Chapter enthusiasm
 - Theme adaptation
- The first and second place winners will be announced during the closing session on Sunday.

DEADLINE:

No entry form is required. Participation is mandatory.



FFEA DISTRICT CONFERENCE
SPIRIT COMPETITION
Judge's Official Results
April 6, 2013

DIVISION WINNERS

1st Place

Elementary	Middle	High

2nd Place

Elementary	Middle	High

3rd Place

Elementary	Middle	High



Volusia County Schools FFEA District Conference Essay Competition

“A teacher takes a hand, opens a mind, and touches a heart.”

COMPETITION PURPOSE

The purpose of the Essay Competition is to provide an opportunity for clubs and chapters to express their views on the topic, *“A teacher takes a hand, opens a mind, and touches a heart.”*

ELIGIBILITY FOR ENTRY

- A. Schools ***must*** indicate their plans to enter the essay competition on the Conference Registration Form. Only clubs/chapters who meet the entry deadline listed on the form will be allowed to compete at the conference.
- B. ***The essay submission deadline is Friday, February 28, 2014.***
- C. ***Must*** be a recognized club or chapter in Volusia County Schools or Charter School.
- D. Students entering the essay competition are expected to be present at the conference.

GUIDELINES

- A. Entries are limited to one entry per member. Each chapter may have an unlimited number of entries.
- B. ***Essays must last no longer than one minute when presented aloud at a moderate speed.***
- C. **Elementary:** Entries may be hand written (in ink only), typed or word processed.
Middle or High School: Entries must be typed or word processed, doubled spaced, with 1 inch margins using a font no smaller than 12 point. The essay must be at least two pages and must not exceed three pages in length.
- D. The essay should focus on the conference theme. Sources used for the essay must be identified on a “Works Cited” page.
- E. Club/chapter and school name ***must*** be indicated on the essay in the upper right hand corner.
- F. Remember- neatness counts!

JUDGING CRITERIA

- A. Three judges will be selected from our school and district community.
- B. A first, second and third place award will be presented to the winning chapters/clubs from the elementary, middle and high school levels.
- C. Ratings will be based on the following:

• Focus	4
• Organization	4
• Support	4
• Language Usage	4
• Conventions	4
TOTAL	
	20

FFEA Student Essay Competition Scoring Rubric

Student Name: _____

Total Points: _____ out of 20

Chapter Name: _____

Category	Total	4	3	2	1
Focus		The writing is focused, purposeful, and demonstrates insight and thought into the topic.	The writing is focused on the topic and its organizational pattern provides for an overall logical progression of ideas.	The writing is focused but may contain some ideas that are loosely connected to the topic.	The writing addresses the topic but loses focus by including loosely related ideas.
Organization		The organizational pattern provides for a logical progression of ideas. The effective use of transitions throughout gives the writing a sense of completeness.	There is an apparent organizational pattern and it is enhanced by the use of transitional devices.	There is an organizational pattern, but it may include a lack of progression of ideas or transitional devices.	There is a weak organizational pattern to the essay with a lack of completeness or closure.
Support		The development of support of the topic is substantial, specific, relevant and concrete.	A great deal of support is provided through use of specific details and examples.	Development of examples and ideas given to support the topic are uneven and lack detail.	Minimal support is provided and ideas and examples are repetitive or not relevant.
Language Usage		The writing has a definite voice and a freshness of expression and uses creative writing strategies such as rich vocabulary and sentence structure.	A mature command of language is demonstrated through a varied vocabulary and sentence structure.	Word choice is limited, vague, or predictable. Sentence structure is basic, demonstrating a weak command of the language.	Word choice is limited, predictable, or incorrect. Errors may obscure meaning.
Conventions		The writing contains few, if any, errors in spelling, usage, syntax, mechanics, or punctuation.	The writing generally follows the conventions of mechanics, syntax, usage, punctuation, and spelling. There are no patterned errors.	The writing contains errors in syntax, mechanics, usage, and punctuation. Commonly used words are spelled correctly.	Substantial errors in basic conventions of mechanics, spelling, usage, syntax, and punctuation occur. Commonly used words are misspelled.
Judge's Comments:					

A score of 0 is awarded because the response:

- Is not related to what the prompt requested
- Is simply a rewording of the prompt
- Does not contain sufficient amount of writing to address the prompt or to determine if the student was addressing the prompt.
- Is incomprehensible
- Is not typed in the correct format



“A teacher takes a hand, opens a mind, and touches a heart.”

Volusia County Schools FFEA District Conference

Display Competition

COMPETITION PURPOSE

The purpose of the Display Competition is to stimulate and recognize club and chapter activity and involvement at the school, in the community, and at the post secondary institutions.

ELIGIBILITY FOR ENTRY

- A. Schools **must** indicate their plans to enter the display competition on the Conference Registration Form. Only clubs/chapters who meet the entry deadline listed on the form will be allowed to compete at the conference.
- B. Display **must** be submitted by **8:25 am** on the day of the conference.
- C. **Must** be a recognized club or chapter in Volusia County Schools or Charter School.
- D. Entries are limited to one display per chapter and are to be created and assembled by students members.

GUIDELINES

- A. Displays must be free standing and mounted on cardboard or foam board.
- B. Displays cannot exceed a width of four (4) feet and a height of four (4) feet
- C. Chapter displays will be set up on a table. Displays should:
 - a. Display photos, banners, clippings, artwork, etc.
 - b. Use commercial or handmade materials that enhance the story and beauty of the display
- D. The club/chapter display should focus on the conference theme and **must** be clearly displayed on panel.
- E. Emphasis should be placed on the activities in which the clubs/chapters are involved and **must** be reflected throughout the display.
- F. Lettering **must** be attractive and coordinated throughout the display.
- G. Club/chapter and school name **must** be indicated on the display.
- H. Remember- neatness counts!

JUDGING CRITERIA

- A. Three judges will be selected from our school and district community.
- B. A first, second and third place award will be presented to the winning chapters/clubs from the elementary, middle and high school levels.
- C. Ratings will be based on the following:

• Consistency with guidelines	7
• Graphics	7
• Organization	7
• Creativity & Originality	7
• Reflection of Conference Theme	7
• Relevance to FFEA	7
TOTAL	42

FFEA Chapter Display Competition Scoring Rubric

Chapter Name: _____ **Total Points:** _____ **out of 42**

School name and/or chapter name not clearly identified and/or display exceeds size restrictions: ___ **Disqualified**

Category	Total	7-6	5-4	3-2	1-0
Text		Text is consistently legible, easy to read and understand throughout display. There are no misspellings and/or incorrect grammar; shows a mastery of language.	Text is consistently legible. There are no misspellings, and minimal instances of incorrect grammar.	Text is small, but legible. There are some misspellings or incorrect grammar.	Text is hard to see and/or illegible. There are several misspellings or incorrect grammar.
Graphics		A wide variety of graphics is provided which complements the display. All graphics are appropriately sized and colorful.	A variety of graphics is provided. Most graphics are appropriately sized and colorful.	A small number of graphics are provided. Some graphics are too small or too large/ overpowering. Some graphics are not colorful.	There are no graphics provided OR graphics are minimal. Most graphics are too small and not colorful.
Organization		Arrangement is well organized, visually appealing, and fluid.	Arrangement is organized and somewhat visually appealing.	Arrangement is somewhat organized but not visually appealing.	Overall arrangement is unorganized/cluttered and/or visually unappealing.
Creativity & Originality		The display consistently reflects original design and creativity throughout.	The display reflects some original design and creativity.	The display reflects little original design and creativity.	The display reflects no original thought or creativity.
Reflection of Conference Theme		The display consistently reflects the theme throughout.	The majority of the display relates to the conference theme.	The display is somewhat related to the theme.	The display is unrelated to the theme.
Relevance to FFEA		The majority of chapter activities that are displayed relate to participation in service to education. The entire display highlights service in education activities in addition to community service, fund-raising, and recruitment.	Some of the chapter activities that are displayed relate to participation in service to education.	A few of the chapter's activities that are displayed relate to participation in service to education.	Chapter activities that are displayed do not relate to the chapter's participation in service to education.
Judge's Comments:					



“A teacher takes a hand, opens a mind, and touches a heart.”

Volusia County Schools FFEA District Conference

Scrapbook Competition

COMPETITION PURPOSE

The purpose of the Scrapbook Competition is to encourage chapters to keep a record of chapter activities and to become actively involved in establishing district FFEA archives.

ELIGIBILITY FOR ENTRY

- A. Schools ***must*** indicate their plans to enter the scrapbook competition on the Conference Registration Form. Only clubs/chapters who meet the entry deadline listed on the form will be allowed to compete at the conference.
- B. Scrapbooks ***must*** be in place for judging by ***8:25 am*** on the day of the conference.
- C. ***Must*** be a recognized club or chapter in Volusia County Schools or Charter School.
- D. Clubs and chapters ***must*** follow all conference rules and regulations.

GUIDELINES

- A. Entries are limited to one scrapbook per chapter.
- B. Emphasis should be placed on activities in which clubs/chapters are involved and ***must*** be reflected throughout the scrapbook.
- D. Chapter scrapbooks ***must*** be divided into a minimum of two major headings and sub-headings as shown below. The sub-headings may or may not include the same sub-headings listed below:
 1. Chapter Services
 - a. School
 - b. Community
 2. Social Activities
 - a. Fundraising Activities
 - b. Publicizing FFEA
- E. The following materials are not required, but may be included:
 - a. Photographs: clear and in focus
 - b. Newspaper clippings: include masthead and date, original (if available)
 - c. Invitations, programs, news releases, original (if available)
 - d. Other items: original or very clear copy

If desired, items that do not fold may be laminated to the page.
- F. The outside cover should be attractive and original.
 - a. Appropriate captions ***must*** identify the person, place, project, etc.
 - b. Captions ***must*** be clearly printed in ink or typed.
 - c. Purchased lettering may be used.
 - d. Lettering, color and type should be consistent and coordinated throughout the scrapbook.

JUDGING CRITERIA

- A. A panel of three judges will be chosen from district and community leaders.
- B. First, second, and third place awards will be presented to winning chapters from elementary, middle, and high school levels.
- C. Ratings will be based on the following::
- | | |
|--|------------|
| • Eye appeal of cover | 20 |
| • Consistency with guidelines | 20 |
| • Creativity and originality | 20 |
| • Neatness and legibility | 20 |
| • <u>Grammar, spelling and punctuation</u> | <u>20</u> |
| Total | 100 |

FFEA DISTRICT CONFERENCE
SCRAPBOOK COMPETITION



Judge's Official Results
April 6, 2013

DIVISION WINNERS

1st Place

Elementary	Middle	High

2nd Place

Elementary	Middle	High

3rd Place

Elementary	Middle	High



“A teacher takes a hand, opens a mind, and touches a heart.”

Volusia County Schools FFEA District Conference

Public Service Announcement Competition (High School Only)

COMPETITION PURPOSE

The purpose of the Public Service Announcement Competition is to stimulate and recognize club and chapter activity and involvement at the school, in the community, and at the post secondary institutions. A Public Service Announcement **must** be short video presentation promoting an issue or topic important to society, and will create public awareness.

ELIGIBILITY FOR ENTRY

- A. Schools **must** indicate their plans to enter the Public Service Announcement competition on the Conference Registration Form. Only clubs/chapters who meet the entry deadline listed on the form will be allowed to compete at the conference.
- B. Public Service Announcement **must** be submitted by **8:25 am** on the day of the conference.
- C. **Must** be a recognized club or chapter in Volusia County Schools or Charter School.
- D. Clubs and chapters **must** follow all conference rules and regulations.

GUIDELINES

- A. Entries are limited to one Public Service Announcement per chapter and **must** be the work of the local chapter student members.
- B. Public Service Announcement entries **must** incorporate the conference theme *“A teacher takes a hand, opens a mind, and touches a heart.”*
- C. The Public Service Announcement **must** not exceed [60] seconds and should be created with some combination of copyright free stills, text, video, music, sound, effects, and/or student voice-overs. **Multimedia elements must adhere to copyright and fair use guidelines. Entries that violate copyright or fair use guidelines will be disqualified.**
- D. Student creator(s), school, sponsoring teacher(s), and the source of any non-original, multimedia elements (images and sounds) and permissions must be identified in the credits (credits may be provided as a last, single frame).
- E. The Public Service Announcement must be submitted on CD in either QuickTime (.mov) or Windows Media Video (.wmv) format.

JUDGING CRITERIA

- A. Three judges will be selected from our school and district community.
- B. A first, second and third place award will be presented to the winning chapters/clubs from the high school level.
- C. Ratings will be based on the following:

• Audience appeal/Creativity & Originality	7
• Relevance to FFEA /Message Effectiveness	7
• Reflection of Theme	7
• Technical Quality	7
• Duration of Presentation/Format	7
• Credits	7
Total	42

FFEA Chapter PSA Competition Scoring Rubric

Chapter Name: _____ **Total Points:** _____ **out of 42**

School name and/or chapter name not clearly identified and/or Copyright and/or Fair Use Guidelines violated: **Disqualified**

Category	Total	7-6	5-4	3-2	1-0
Audience Appeal/ Creativity & Originality		The PSA engages the audience and maintains interest from beginning to end. The PSA uses unexpected and novel techniques to illustrate exemplary creativity, originality, and imagination. Leaves the audience with a “Wow” reaction.	The PSA catches audience attention early, but loses audience interest before the end. The PSA engages the audience with imaginative design elements that enhance an original idea or message.	The PSA has moments of audience appeal, but it is brief. The PSA reflects some creativity, but it lacks originality; may include novel ways of presenting an original idea or message but is used inconsistently throughout the PSA.	The PSA has no audience appeal; audience mostly ignores the broadcast. The PSA demonstrates some imagination without real engagement of the audience; lacks creativity and originality.
Relevance to FFEA/ Message Effectiveness		The PSA is rich in content and provides much informational material on FFEA. The combination of creativity, technical skill, and audience appeal are very effective in delivering a strong message about the selected topic.	The PSA conveys some informational material FFEA. The combination of creativity, technical skill, and audience appeal deliver a clear message about the selected topic.	The PSA conveys minimal informational material on FFEA. The intent of the PSA is understood, but it has little motivational value.	The PSA conveys no evident informational material on FFEA. The message is not clear in the PSA.
Reflection of Theme		Theme is clear and concise throughout the entire PSA. Exemplary demonstration of the theme through a single thought or phrase.	Theme is clear and concise throughout the entire PSA.	Theme is present but not consistent throughout.	Mixed themes contained without clear connection.
Technical Quality		A high degree of technical skill is evident in the production of the PSA.	Technical skill is evident in the PSA and adds to the quality of the announcement.	Some technical skill is evident in the creation of the PSA.	Very little technical skill is evident in the production of the PSA.
Duration of Presentation/ Format		Length of presentation was one minute or less. Format was in either .MOV or .WMV.		Presentation was more than one minute or format was not in either .MOV or .WMV.	
Credits		Credits are provided and include student creator(s), school, sponsoring teacher(s), and source(s) of any non-original, multimedia elements and permissions.	Credits included, but some elements are missing or there are minor typos.	Credits included, but many elements are missing or there are several typos.	Either no credits provided at end, or there are numerous elements missing.
Judge's Comments:					



“A teacher takes a hand, opens a mind, and touches a heart.”

Volusia County Schools FFEA District Conference PowerPoint Competition (High School Only)

COMPETITION PURPOSE

The purpose of the PowerPoint Competition is to stimulate and recognize club and chapter activity and involvement at the school, in the community, and at the post secondary institutions.

ELIGIBILITY FOR ENTRY

- A. Schools **must** indicate their plans to enter the PowerPoint competition on the Conference Registration Form. Only clubs/chapters who meet the entry deadline listed on the form will be allowed to compete at the conference.
- B. PowerPoint **must** be submitted by **8:25 am** on the day of the conference.
- C. **Must** be a recognized club or chapter in Volusia County Schools or Charter School.
- D. Entries are limited to one PowerPoint per chapter and **must** be the work of the local chapter student members.

GUIDELINES

- A. PowerPoint presentation is intended to showcase the chapter and school. Entries **must** incorporate the conference theme *“A teacher takes a hand, opens a mind, and touches a heart.”*
- B. The PowerPoint **must** not exceed 3 minutes and should include audio and/or music, graphics, transitions and effects, and **must** be timed to run automatically. The PowerPoint should be created with a combination of stills, text, video, music, sound, effects and/or student voice-overs. The presentation must be submitted on a flash drive or CD. **Multimedia elements must adhere to copyright and fair use guidelines. Entries that violate copyright or fair use guidelines will be disqualified.**
- C. Student creator(s), school, sponsoring teacher(s), and the source of any non-original, multimedia elements (images and sounds) and permissions must be identified in the credits (credits may be provided as a last, single slide).
- D. The first place winning PowerPoint presentation will be shown during the closing ceremony.

JUDGING CRITERIA

- A. Three judges will be selected from our school and district community.
- B. A first, second and third place award will be presented to the winning chapters/clubs from the high school level.
- C. Ratings will be based on the following:

• Audience appeal	7
• Relevance to FFEA	7
• Reflection of Theme	7
• Creativity & Originality	7
• Editing	7
• Duration of Presentation	7
• Credits	7
Total	49

FFEA Chapter PowerPoint Competition Scoring Rubric

Chapter Name: _____ **Total Points:** _____ **out of 49**

School name and/or chapter name not clearly identified and/or Copyright and/or Fair Use Guidelines violated: **Disqualified**

Category	Total	7-6	5-4	3-2	1-0
Audience Appeal		All graphics relate to chapter activities and conference theme. Design is visually appealing and fluid. There are no misspellings and/or incorrect grammar.	Most of the graphics relate to chapter activities and conference theme. There are no misspellings and/or incorrect grammar.	Some graphics do not relate to theme and/or chapter activities. Some graphics are too small. Design is not very creative. Misspellings and/or incorrect grammar are evident.	Graphics are minimal or irrelevant to chapter activities and theme. Design is sloppy and/or unappealing. There are numerous misspellings or incorrect grammar.
Relevance to FFEA		The chapter activities presented relate to participation in service to education. The entire presentation highlights service in education activities as well as fund-raising and recruitment.	The majority of the chapter activities presented relates to participation in service to education and highlights the chapter's emphasis on education related community and school service.	Some of the chapter activities presented do not relate to participation in service to education or highlights non-education related activities.	Most of the chapter activities presented do not relate to participation in service to education or highlights non-education related activities.
Reflection of Theme		The presentation consistently reflects the theme throughout.	The majority of the presentation relates to the conference theme.	Presentation is somewhat related to theme.	Presentation is unrelated to theme.
Creativity & Originality		Presentation consistently reflects original design and creativity throughout.	Presentation reflects original design and creativity throughout.	Presentation demonstrates some original design and creativity.	Presentation shows very little original thought or design.
Editing		Transitions, effects, audio, and edits are appropriate to the subject matter, add to the flow of the presentation and, most importantly, do not distract from the presentation.	Most transitions, effects, audio, and edits are appropriate to the subject matter, add to the flow of the presentation and, most importantly, do not distract from the presentation.	Some transitions, effects, audio, and edits are appropriate to the subject matter, add to the flow of the presentation and, most importantly, do not distract from the presentation.	Little to no transitions, effects, or audio or their use distracts from the presentation.
Duration of Presentation		Length of presentation was 3 minutes or less. Presentation set to run automatically.		Length of presentation was longer than 3 minutes. Presentation not set to run automatically	
Credits		Credits are provided and include student creator(s), school, sponsoring teacher(s), and source(s) of any non-original, multimedia elements and permissions.	Credits included, but some elements are missing or there are minor typos.	Credits included, but many elements are missing or there are several typos.	Either no credits provided at end, or there are numerous elements missing.
Judge's Comments:					



“A teacher takes a hand, opens a mind, and touches a heart.”

Volusia County Schools FFEA District Conference Lesson Plan (High School Only)

COMPETITION PURPOSE

The purpose of the Lesson Plan Competition is to stimulate and recognize club and chapter activity and involvement at the school, in the community, and at the post secondary institutions.

ELIGIBILITY FOR ENTRY

- A. Schools **must** indicate their plans to enter the lesson plan competition on the Conference Registration Form. Only clubs/chapters who meet the entry deadline listed on the form will be allowed to compete at the conference.
- B. Lesson plans **must** be submitted by **8:25 am** on the day of the conference.
- C. **Must** be a recognized club or chapter in Volusia County Schools or Charter School.
- D. Students entering the lesson plan competition are expected to be present at the conference.

GUIDELINES

- A. Entries are limited to one lesson per student and **must** be the work of the local chapter student member.
- B. Lesson plans are divided into four categories:
 - a. Pre-Kindergarten
 - b. Elementary
 - Primary (K-2)
 - Intermediate (3-5)
 - c. Middle schools (Grades 6-8)
 - d. High schools (grades 9-12)
- C. The lesson plan may be written for any of the following subjects or a combination of two or more subjects:
 - a. English/Language Arts
 - b. Fine Arts
 - c. Health
 - d. Mathematics
 - e. Physical Education
 - f. Science
 - g. Social Studies
- D. The lesson plan **must** be typed and should follow the format on the attached page. All lesson plans should address the Next Generation Sunshine State Standards or the Common Core State Standards found at www.floridastandards.org
- E. Member may wish to provide additional demonstrations of the lesson, including videos of the lesson being presented to students, examples of student work, and reflections on lesson execution.
- F. Club/chapter, school name, and student name **must** be indicated on the lesson plan.

JUDGING CRITERIA

- A. Three judges will be selected from our school and district community.
- B. A first, second and third place award will be presented to the winning chapters/clubs from the high school level.
- C. Ratings will be based on the following:

• Objective	4
• Standard and Benchmarks Addressed	4
• Preparation and Materials Needed	4
• Introduction	4
• Instructional Strategies/Presentation of Content	4
• Providing Practice and Feedback	4
• Summarization and Review	4
• Assessments	4
• Creativity/Originality	4
• <u>Grade Level Appropriateness</u>	<u>4</u>
Total	40

Lesson Plan Format

OBJECTIVE

STANDARDS AND BENCHMARKS ADDRESSES

PREPARATION AND MATERIALS NEEDED

INTRODUCTION

INSTRUCTIONAL STRATEGIES/PRESENTATION OF CONTENT

PROVIDING PRACTICE AND FEEDBACK

SUMMARIZATION AND REVIEW

ASSESSMENTS

FFEA Student Lesson Plan Competition Scoring Rubric

Member Name: _____ **Total Points:** _____ out of 40

Chapter Name: _____

Lesson plans for which "yes" cannot be answered for all questions below will be disqualified:

	Yes	No
Is the targeted grade level indicated?		
Is/Are the appropriate subject area(s) addressed?		
Is the lesson plan typed?		
Does the lesson plan include the sections labels required by the format?		
Does the lesson address the Next Generation Sunshine State Standards or the Common Core State Standards?		

4 - Superior	3 - Proficient	2 - Developing	1 – Needs Work	Score
A. Objective: Describe an objective that includes readily observable and measureable behaviors or performance tasks. (What are the students expected to know and be able to do at the end of the lesson?)				
Stated clearly in specific, student friendly language. Connected to the targeted standards/ benchmarks.	Stated clearly, but not in student friendly language. Connected to the targeted standards/ benchmarks.	Objective stated. Connection to targeted standards/ benchmarks not clear.	Objective stated, but in very broad terms.	
B. Standards/benchmarks addressed: List the target standards/benchmarks as well as standard/benchmark I.D. number.				
Targeted standards/ benchmarks for the lesson are written out and logically connected.	Targeted standards/ benchmarks for the lesson are written out.	Targeted standards/ benchmarks for the lesson are listed, but either the number or the text is missing.	There are errors in listing the targeted standards/ benchmarks.	
C. Preparation and Materials needed: Provide a list of materials and any steps needed to prepare for the lesson.				
A thorough list of the materials needed and the steps for preparation for the lesson is included.	A list of materials needed is included, but the preparation for the lesson is not thorough.	There is a list of materials, but their use is unclear due to a lack of description of preparation.	There is only a minimal list of materials.	
D. Introduction: Detail introductory activities that focus student attention, may provide for review or a very brief practice on previous objectives, and develop readiness for the current lesson.				
Includes creative “hook” that draws in students and involves them in the lesson.	Includes a “hook” designed to draw in students.	Includes an introductory activity.	Includes an introduction, but no activity.	
E. Instructional Strategies/Presentation of Content: Describe how the lesson will be presented and the instructional strategies to be used. These may include approaches such as interactive demonstration, inquiry, project-based learning, case study, discussion, and the use of instructional technology. Activities will reflect more student-centered approach to teaching and learning.				
A thorough presentation of the lesson content is given with a strong emphasis on student – centered learning.	The lesson content is presented but is not thorough. Instruction is student-centered.	The lesson content is presented and there are some approaches to student-centered instruction.	This is a minimal presentation of the lesson content. Little or no student-centered instruction is presented.	
F. Providing feedback and practice: Demonstrate how you will provide opportunities for student practice and give feedback to students during instruction.				
There are multiple opportunities for practice and feedback to the students and a	There are multiple opportunities for practice and feedback to the students allowing for	There are opportunities for practice and feedback to the students but no opportunity for	There are uniform opportunities for practice and feedback to the	

description of how instruction will be differentiated.	differentiation of instruction.	differentiation.	students.	
G. Summarization and review: Detail how you will provide for a review and summary of the lesson and opportunities for student self-evaluation of his/her learning.				
This stage of the lesson provides students with an opportunity to self evaluate understanding of key concepts and prepare for an interim assessment.	This stage of the lesson provides students with a review of key concepts and an opportunity to prepare for an interim assessment.	This stage of the lesson provides students with a basic summary of key lesson concepts.	This stage of the lesson provides an incomplete review of key concepts.	
H. Assessments: Describe how you will check and access for student understanding and provide for both formative and interim assessments.				
There are provisions for both formative assessments and an interim assessment that allow students to demonstrate what they have learned and how they can apply it.	There are provisions for both formative assessments and an interim assessment that allow students to demonstrate what they have learned.	There are provisions for an interim assessment that allows students to demonstrate what they have learned but may not include application.	There are minimal provisions for formative assessments and interim assessments.	
I. Creativity/Originality				
The lesson plan shows creativity throughout by using original activities, presentation methods, etc. There is not a feeling that the lesson is patterned on one found online or one that has been seen previously.	The lesson plan shows creativity by using original activities, presentation methods, etc. Although another source may have been used as a resource there is very little evidence of this.	The lesson plan shows creativity by using some original activities, presentation methods, etc. There may be some evidence that the lesson is patterned on one found online.	The lesson plan does not show creativity. Activities, presentation methods, etc. are clearly copied from online lesson plans or lessons that the student has seen.	
J. Grade Level Appropriateness				
The lesson plan meets the needs of the targeted class by considering developmental levels, interests, and learning styles and showing flexibility in approach and activities.	The lesson plan meets the needs of the targeted class by considering developmental levels, interests, and learning styles.	The lesson plan attempts to meet the needs of the targeted class by considering developmental levels, interests, and learning styles.	The lesson plan may be grade level appropriate, but lacks a demonstrate awareness of developmental levels and lacks flexibility.	



“A teacher takes a hand, opens a mind, and touches a heart.”

Volusia County Schools FFEA District Conference Speech Competition (High School Only)

COMPETITION PURPOSE

The purpose of the Speech Competition is to stimulate and recognize club and chapter activity and involvement at the school, in the community, and at the post secondary institutions.

ELIGIBILITY FOR ENTRY

- A. Schools **must** indicate their plans to enter the Speech competition on the Conference Registration Form. Only clubs/chapters who meet the entry deadline listed on the form will be allowed to compete at the conference.
- B. A copy of the speech **must** be submitted by **8:25 am** on the day of the conference.
- C. **Must** be a recognized club or chapter in Volusia County Schools or Charter School.
- D. Students entering the speech competition are expected to be present at the conference.

GUIDELINES

- A. Entries are limited to one Speech per chapter and **must** be the work of the local chapter student members.
- B. Speech entries **must** incorporate the conference theme *“A teacher takes a hand, opens a mind, and touches a heart.”*
- C. The Speech **must** not exceed 3 minutes and cannot be less than 2 minutes. Points will be deducted from speeches that do not adhere to this guideline.
- D. Speeches are expected to be well practiced and close to, if not completely memorized. Cue cards will be permitted, but students must not read their entire speech from the cards.
- E. First place winners will deliver their speech at the closing ceremony.

JUDGING CRITERIA

- A. Three judges will be selected from our school and district community.
- B. A first, second and third place award will be presented to the winning chapters/clubs from the high school level.

C. Ratings will be based on the following:	• Content	4
	• Focus	4
	• Organization	4
	• Language Usage	4
	• Voice Quality	4
	• Body Language	4
	• <u>Delivery</u>	4
	Total	28

FFEA Student Speech Competition Scoring Rubric

Student Name: _____

Total Points: _____ out of 28

Chapter Name: _____

**Judges may deduct up to 4 points if the speech deviates from the 2-3 minute timeframe specified in the competition guidelines.*

Category	Total	4	3	2	1
Content		The information is accurate and demonstrates insight and thought. The development of support for the topic is substantial and specific.	The purpose is clearly articulated and accomplished. A great deal of support is provided through use of specific details and examples. All information is accurate.	The purpose is articulated, but not fully accomplished. Statements may be inaccurate. Development of examples and ideas given to support the topic are uneven and lack detail.	The purpose is not clearly articulated and not accomplished. Some statements are inaccurate. Minimal support is provided to the topic, and ideas and examples are repetitive.
Focus		The information presented is focused and purposeful. All statements are suitable to the topic. There is no extraneous information.	The information is focused on the topic and its organizational pattern provides for an overall logical progression of ideas. Most of the statements are suitable to the topic.	The speech is focused but may contain some ideas that are loosely connected to the topic or are not suitable to the topic.	The writing addresses the topic but loses focus by including loosely related or irrelevant ideas. Minimal support of the topic is given.
Organization		The topic is well developed through an organizational pattern that provides for a logical progression of ideas. The effective use of transitions throughout gives a sense of completeness.	The topic is adequately developed. There is an apparent organizational pattern and it is enhanced by the use of transitional devices.	There is an organizational pattern, but it may include a lack of progression of ideas or transitional devices.	There is a weak organizational pattern to the presentation with a lack of completeness or closure. It is difficult to follow.
Language Usage		The language is creative, persuasive and has a definite voice with a freshness of expression that uses rich vocabulary and sentence structure.	Language is clear and precise. A mature command of language is demonstrated through a varied vocabulary and sentence structure.	Language is somewhat clear. Word choice is limited, vague, or predictable. Sentence structure is basic.	Language is unclear and imprecise. Word choice is limited, predictable, or incorrect. Errors may obscure meaning.
Voice Quality		Speaker has excellent voice quality and diction. Speech is fluid and interesting.	Speaker has good voice quality and diction. The speech moves fluidly.	Voice quality and diction are mostly adequate. Speech moves unevenly throughout.	Voice quality and diction are poor. Speech is stilted and moves sluggishly.
Body Language		Appropriate gestures are used to emphasize points. Speaker has excellent eye contact with audience.	Appropriate gestures are used. Speaker has good eye contact with audience.	Some appropriate gestures are used. Speaker makes some eye contact with audience.	Few or inappropriate gestures are used throughout. Speaker lacks confidence and is unable to make good eye contact with audience.
Delivery		Speech is well-practiced and speaker rarely refers to note cards. The speaker is comfortable and charismatic.	Speaker is familiar with speech material and relies little on note cards.	Speech appears somewhat practiced and speaker sometimes looks away from note cards.	Speech appears unpracticed and speaker reads from note cards.
Judge's Comments:					